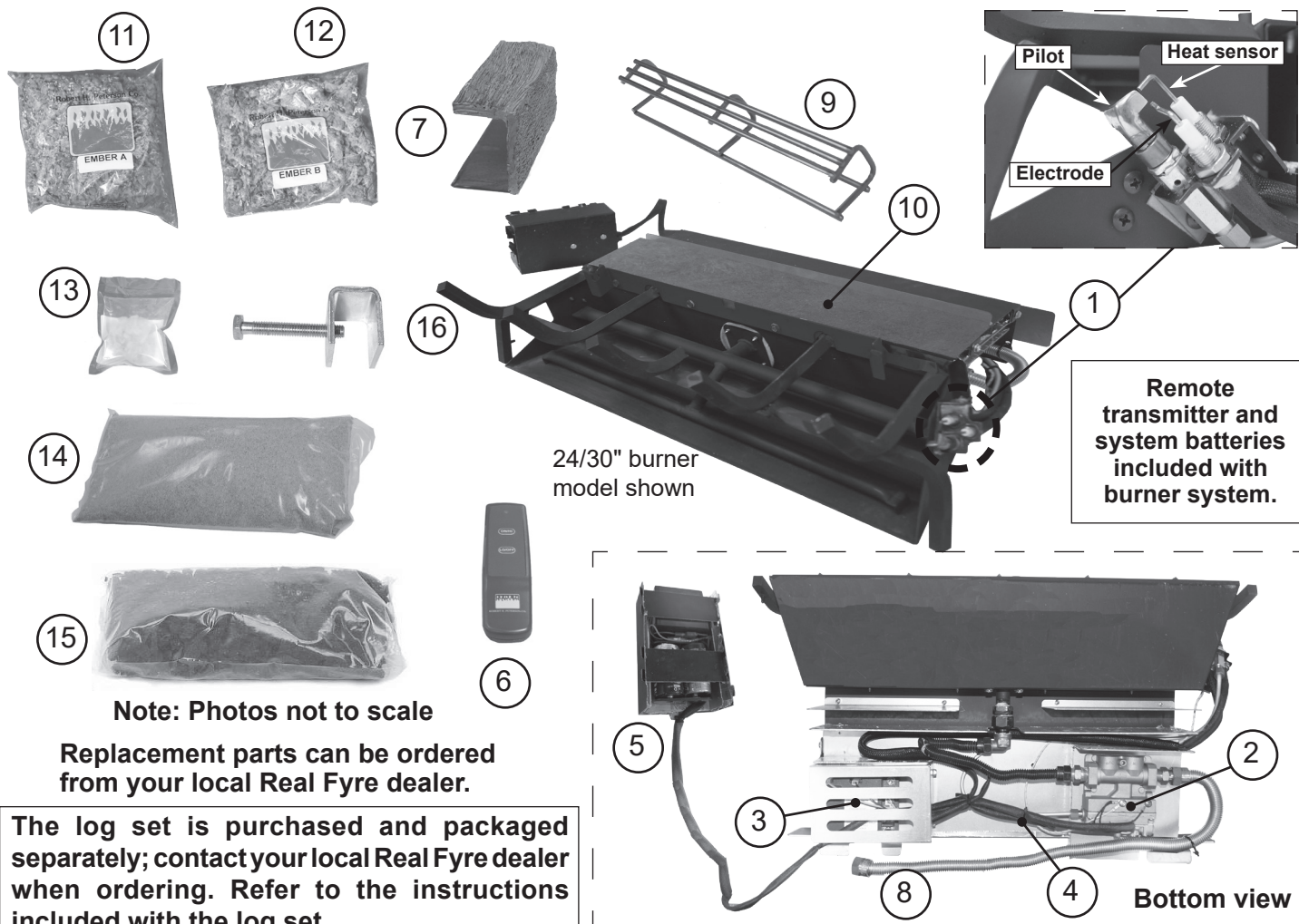


# G52 BURNER PARTS LIST - 02 SERIES



Note: Photos not to scale

Replacement parts can be ordered from your local Real Fyre dealer.

The log set is purchased and packaged separately; contact your local Real Fyre dealer when ordering. Refer to the instructions included with the log set.

Item	Description	18/20" model		24/30" model	
		Part No.	Qty.	Part No.	Qty.
1.	Pilot assembly (natural) or Pilot assembly (propane)	PAC-6 PAC-7	1 1	PAC-6 PAC-7	1 1
2.	Control valve (natural) or Control valve (propane)	SV-45 SV-45P	1 1	SV-45 SV-45P	1 1
3.	Control module	IMP-1	1	IMP-1	1
4.	Main harness assembly	WH-03	1	WH-03	1
5.	Remote receiver box (includes remote receiver, battery box, metal heat shield assy, wire harness)	AR-02-1	1	AR-02-1	1
6.	Remote transmitter (only)	AT-R1-1	1	AT-R1-1	1
7.	Decorative heat shield	HS-37	1	HS-37	1
8.	Flex connector (w/ adapter), 1/2" O.D. x 24"	3035	1	3035	1
9.	Radiant booster grid	SC-10	1	SC-15	1
10.	Insulation pad	IN-6	1	IN-7	1
11.	Glowing embers A	EM-22A	1	EM-21A	1
12.	Glowing embers B	EM-22B	1	EM-21B	1
13.	Bryte coals	EM-11	1	EM-11	1
14.	Sand (natural gas) or Vermiculite (propane gas)	CS-4 LF-15-3.5	2 1	CS-10 LF-15-7	1 1
15.	Lava granules	LF-4	1	LF-4	1
16.	Damper clamp	DC-1	1	DC-1	1